



GRILLING

CATALOG 2021





ALUMINUM DRIP PAN
ACE NO. 8211013

9.1"W x 13.1"L

Foil liners for grease catch pan
Fits all Genesis® II
300 series gas grills



STEEL BLACK GRILL BRUSH
ACE NO. 8352460

Wide brush head cleans
large surfaces quickly and efficiently
Thick stainless steel bristles resist wear
Ergonomic handle provides control
and leverage when cleaning
cooking grates



PREMIUM GRILL COVER
ACE NO. 8526535

Premium grill cover fits Genesis® 300 series
UV inhibitors in fabric resist fading
Breathable, weather-resistant fabric
protects grill from the elements
Fastening straps keep
the cover in place



GENESIS® II E-325™
Ace No. 8017320 (LP)/
8017323 (NG)

ACE EXCLUSIVE

Cooks up to 20 burgers/48,000 BTUs
Cooking Grate: Porcelain-Enameled, Cast-Iron
GS4 High Performance Grilling System
Three stainless steel burners
Sear Station® burner
One handle light



WEBER CONNECT SMART GILLING HUB
ACE NO. 8029955

Step-by-step grilling assistant that sends
notifications directly to your smartphone
Receive flip and serve notifications
Select doneness and receive
alerts when ready
Never overcook or undercook food
with food temperature monitoring



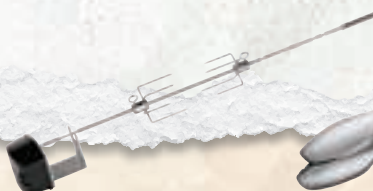
Ace No. 8000277

GRILLING STONE

Ceramic stone distributes heat
quickly and evenly

Specially formulated glaze
promotes crispy, restaurant-
quality crusts

Durable finish resists fading,
cracking and chipping



Ace No. 8532350

ROTISSERIE

Forks designed to hold both large
and small cuts of meat

Includes stainless steel shaft,
forks, handle and hardware

The maximum weight allowance
for this rotisserie and motor is
20 lb.

Fits Genesis® II 200/300 series



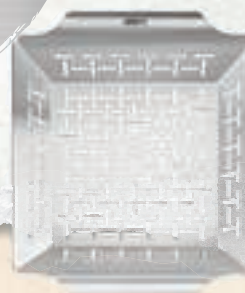
Ace No. 8321754

**STAINLESS STEEL BLACK
GRILL TONGS**

Unique front end design provides
secure grip on a variety of food

Soft-touch handles offer
comfortable, nonslip grip

Handles lock for compact
storage



Ace No. 8212433

GRILL BASKET

Great for charcoal or gas grills

Ideal for vegetables and smaller
pieces of meat

Wide carrying handles

Can be easily cleaned with soap
and water



Ace No. 8531758

PREMIUM GRILLING GLOVES

Flexible, heat-resistant material
for easy handling of grilling tools
and grill lid

Silicone palm for gripping
grilling tools

Hand wash



**Ace No. 8016684 (LP)/
8016676 (NG)**

GENESIS® II E-310™

Cooks up to 20 burgers/39,000 BTUs

Cooking Grate: Porcelain-Enameled,
Cast-Iron

GS4 High Performance Grilling System

Fuel Gauge and easy access tank
(LP only)

iGrill 3 Compatible (Sold Separately)

Stainless Steel Flavorizer Bars

Grill Cover Sold Separately (8526535)



**Ace No. 8016679 (LP)/
8016665 (NG)**

GENESIS® II E-315™

Cooks up to 20 burgers/39,000 BTUs

Cooking Grate: Porcelain-Enameled,
Cast-Iron

GS4 High Performance Grilling System

Fuel Gauge and easy access tank
(LP only)

iGrill 3 Compatible (Sold Separately)

Stainless Steel Flavorizer Bars

Grill Cover Sold Separately (8526535)

ACE EXCLUSIVE COLOR: INDIGO (8017318)
(LP)



**Ace No. 8016680 (LP)/
8016682 (NG)**

GENESIS® II E-335™

Cooks up to 20 burgers/60,000 BTUs

Cooking Grate: Porcelain-Enameled,
Cast-Iron

GS4 High Performance Grilling System

Includes a Sear Station and Side Burner

Fuel Gauge and easy access tank (LP only)

Stainless Steel Flavorizer Bars

iGrill 3 Compatible (Sold Separately)

Grill Cover Sold Separately (8526535)

Additional Colors: Deep Ocean Blue
(8037375) (LP)



**Ace No. 8060338 (LP)/
8060325 (NG)**

GENESIS® II S-315™

Cooks up to 20 burgers/39,000 BTUs

Cooking Grate: 7MM Stainless Steel Rod

GS4 High Performance Grilling System

Fuel Gauge and easy access tank
(LP only)

iGrill 3 Compatible (Sold Separately)

Stainless Steel Flavorizer Bars

Grill Cover Sold Separately (8526535)



**Ace No. 8016686 (LP)/
8016683 (NG)**

GENESIS® II S-335™

Cooks up to 20 burgers/60,000 BTUs

Cooking Grate: 7MM Stainless Steel Rod

GS4 High Performance Grilling System

Includes a Sear Station and Side Burner

Fuel Gauge and easy access tank
(LP only)

Stainless Steel Flavorizer Bars

iGrill 3 Compatible (Sold Separately)

Grill Cover Sold Separately (8526535)



**Ace No. 8016636 (LP)/
8016661 (NG)**

GENESIS® II S-435™

Cooks up to 20 burgers/69,000 BTUs

Cooking Grate: 7MM Stainless Steel Rod

GS4 High Performance Grilling System

Includes a Sear Station and Side Burner

Fuel Gauge and easy access tank
(LP only)

Stainless Steel Flavorizer Bars

iGrill 3 Compatible (Sold Separately)

Grill Cover Sold Separately (8526527)



**Ace No. 8060339 (LP)/
8060324 (NG)**

GENESIS® II SE-315™

Cooks up to 20 burgers/39,000 BTUs

Cooking Grate: 9MM Stainless Steel Rod

GS4 High Performance Grilling System

Handle light

Fuel Gauge and easy access tank
(LP only)

Stainless Steel Flavorizer Bars

iGrill 3 Compatible (Sold Separately)

Grill Cover Sold Separately (8526535)

Additional Colors: Deep Ocean Blue:
8060340 (LP)/8060332 (NG)



**Ace No. 8016671 (LP)/
8016649 (NG)**

GENESIS® II SE-335™

Cooks up to 20 burgers/60,000 BTUs

Cooking Grate: 9MM Stainless Steel Rod

GS4 High Performance Grilling System

Includes a Sear Station burner, Side Burner
and Handle Light

Fuel Gauge and easy access tank
(LP only)

Stainless Steel Flavorizer Bars

iGrill 3 Compatible (Sold Separately)

Grill Cover Sold Separately (8526535)



***3 YEARS**
ELECTRICAL COMPONENTS
(Weber Connect Controller)



**Ace No. 8060194 (LP)/
8060334 (NG)**

GENESIS® II SMART GRILL EX-315

Cooks up to 20 burgers/39,000 BTUs

Cooking Grate: Porcelain-Enameled,
Cast-Iron

Integrated smart tech package

Digital, real-time food temp and readiness
countdowns on your phone and grill

Receive alerts when food has reached your
desired doneness

LED Handle light and lighted knobs

Stainless Steel Flavorizer Bars

Grill Cover Sold Separately (8526535)



**Ace No. 8060192 (LP)/
8060331 (NG)**

GENESIS® II SMART GRILL EX-335

Cooks up to 20 burgers/60,000 BTUs

Cooking Grate: Porcelain-Enameled,
Cast-Iron

Integrated smart tech package

Digital, real-time food temp and readiness
countdowns on your phone and grill

Receive alerts when food has reached your
desired doneness

LED Handle light and lighted knobs

Stainless Steel Flavorizer Bars

Includes a Sear Station and Side Burner

Grill Cover Sold Separately (8526535)



**Ace No. 8060191(LP)/
8060328(NG)**

GENESIS® II SMART GRILL SX-335

Cooks up to 20 burgers/60,000 BTUs

Cooking Grate: 7MM Stainless Steel Rod

Integrated smart tech package

Digital, real-time food temp and readiness
countdowns on your phone and grill

Receive alerts when food has reached your
desired doneness

LED Handle light and lighted knobs

Stainless Steel Flavorizer Bars

Includes a Sear Station and Side Burner

Grill Cover Sold Separately (8526535)

PRO TIP:
Take a drink and relax knowing that you're connected to your Genesis® no matter where you are. Whether prepping side dishes in the kitchen, watching the game or enjoying time with family, you can view everything your smart grill has to offer – such as cook time, most accurate food and grill temp, and fuel level directly at the grill and on your smartphone.



**Ace No. 8292955 (LP)/
8292989 (NG)**

SUMMIT® S-470™

Cooks up to 24 steaks and 2 full
chickens/88,000 BTUs

Cooking Grate: 9MM Stainless Steel Rod

Snap-jet individual burner ignition system

Stainless steel smoker box and smoker
burner, side burner, rear-mounted,
infrared rotisserie burner

Tuck-away rotisserie system with flip-up
motor and separate spit and fork storage

One handle light

Stainless Steel Flavorizer Bars

Grill Cover Sold Separately (8406423)



**Ace No. 8292997 (LP)/
8292583 (NG)**

SUMMIT® S-670™

Cooks up to 24 steaks, 2 full chickens and
6 ears of corn/100,000 BTUs

Cooking Grate: 9MM Stainless Steel Rod

Snap-jet individual burner ignition system

Stainless steel smoker box and smoker
burner, side burner, rear-mounted,
infrared rotisserie burner

Tuck-away rotisserie system with flip-up
motor and separate spit and fork storage

Two handle lights

Stainless Steel Flavorizer Bars

Grill Cover Sold Separately (8406431)





PREMIUM GRILL COVER
ACE NO. 8882821

UV inhibitors in fabric resist fading
Breathable, weather-resistant fabric
protects grill from the elements
Fastening straps keep the cover in place
Fits: Spirit® 300 series, Spirit® 200 series
(with side-mounted controls)



iGrill 3
ACE NO. 8592180

App-connected Bluetooth® thermometer
Four probe capacity (two meat probes included)
Designed for use with Spirit® II and
Genesis® II gas grills and permanently
mounts to the side table
Food temperature alerts to your smart device
Check the fuel level of your grill's gas tank
directly from your smart device



3-PIECE TOOL SET ACE NO. 8321796

Includes: Stainless Steel Spatula, Tongs and Fork
Tong handles lock for compact storage
Spatula's angled neck reaches over edge of grill
keeping your hands and arms away from heat
Fork tines designed to pierce food
without shredding it

SPIRIT® II SERIES E-310
Ace No. 8863581 (LP)/
8863482 (NG)

Cooks up to 18 burgers/30,000 BTUs
Cooking Grate: Porcelain-Enameled, Cast-Iron
GS4 Grilling System
Fuel Gauge and easy access tank
(LP only)
iGrill 3 Compatible (Sold Separately)
Fold-down left stainless
steel side table



WEBER GRILL BRUSH 18"
ACE NO. 8211062

Solid bamboo handle
Durable stainless steel bristles that can
withstand frequent use
Leather loop to hang the brush from a
grill hook for easy storage
Notched scraper removes stubborn materials
Can be cleaned with warm,
soapy water



Ace No. 8211005

ALUMINUM DRIP PAN

5.7"W x 8.7"L

Line the catch pan of your grill with these
handy drip pans, versatile enough to be
used to cook a side dish or two

Disposable for easy cleanup

100 percent recyclable aluminum



Ace No. 8882342

PORCELAIN ENAMEL GRIDDLE

Provides exceptional heat retention and
distribution, ensuring evenly cooked food

Easy-to-clean semigloss enameled surface

Angled cooking surface helps drain
drippings into the built-in reservoir and
away from food

Fits Spirit® and Spirit® II 200/300 Series



Ace No. 8029953

GRILL 'N GO LIGHT

Easily attaches to the grill handle

Detachable to shine extra light where you
need it

LED illuminates the entire cooking surface

Motion sensor with an on/off switch saves
battery life

Includes 3 AAA batteries



Ace No. 8321531

POULTRY ROASTER

Makes transporting your roasted chicken
to and from the grill quick and easy

Holds most 12 ounce cans

For use on any charcoal or gas grill



Ace No. 8863367 (LP)

SPIRIT® II E-210™

Cooks up to 14 burgers/26,500 BTUs

Cooking Grate: Porcelain-Enameled, Cast-Iron

GS4 High Performance Grilling System

Fuel Gauge and easy access tank (LP only)

Porcelain-Enameled Flavorizer Bars

Fold-down left stainless steel side table

iGrill 3 Compatible (Sold Separately)

Grill Cover Sold Separately (8883001)

Ace No. 8255994 (LP)

SPIRIT® E-210™

Cooks up to 14 burgers/26,500 BTUs

Cooking Grate: Porcelain-Enameled, Cast-Iron

Porcelain-enameled finish helps prevent rusting and peeling

Low maintenance and easy-to-clean grease management system

Porcelain-Enameled Flavorizer Bars

Grill Cover Sold Separately (8883001)

Ace No. 8256588 (LP)/ 8256919 (NG)

SPIRIT® E-310™

Cooks up to 18 burgers/32,000 BTUs

Cooking Grate: Porcelain-Enameled, Cast-Iron

Porcelain-enameled finish helps prevent rusting and peeling

Low maintenance and easy-to-clean grease management system

Porcelain-Enameled Flavorizer Bars

Grill Cover Sold Separately (8882821)



Ace No. 8460875 (LP)

SPIRIT® E-330™

Cooks up to 14 burgers/49,500 BTUs

Porcelain-enameled finish helps prevent rusting and peeling

Cooking Grate: Porcelain-Enameled, Cast-Iron

Includes a Sear Station and Side Burner

Porcelain-Enameled Flavorizer Bars

Grill Cover Sold Separately (8882821)

Ace No. 8029941 (LP)/ 8029939 (NG)

SPIRIT® S-315™

Cooks up to 18 burgers/32,000 BTUs

Premium-feel knobs and stainless steel lid handle

Cooking Grate: Porcelain-Enameled, Cast-Iron

Stainless steel Flavorizer Bars

Grill Cover Sold Separately (8882821)

Ace No. 8029937 (LP)

SPIRIT® SP-335™

Cooks up to 14 burgers/49,500 BTUs

Premium-feel knobs and stainless steel lid handle

Cooking Grate: 7mm stainless steel rod cooking grates

Includes a Sear Station and Side Burner

Stainless steel Flavorizer Bars

Grill Cover Sold Separately (8882821)

Ace No. 8060209 (LP)/ 8060326 (NG)

SPIRIT® SX-315 SMART GRILL

Cooks up to 18 burgers/32,000 BTUs

Integrated smart tech package

Cooking Grate: Porcelain-Enameled, Cast-Iron

Digital, real-time food temp and readiness countdowns on your phone and grill

Stainless steel Flavorizer Bars

Receive alerts when food has reached your desired doneness

Grill Cover Sold Separately (8882821)



PRO TIP:
Remove the circular grate insert and replace it with a griddle, poultry roaster, pizza stone or any of the many gourmet BBQ system inserts to choose from. The hinged grate makes it easy to add charcoal while grilling.

Ace No. 8060327

SUMMIT® KAMADO E6

Dual-walled insulation for precise, quick temperature changes

Steel construction and porcelain-enameled finish for durability

RapidFire lid damper boosts air flow to quickly reach high heat

One-Touch Cleaning System™ for hassle-free cleanup

Adjustable grate for low and slow smoking or high-heat searing

Gourmet BBQ System ready, cookware sold separately

Grill Cover Sold Separately (8030411)

Ace No. 8060341

SUMMIT® KAMADO S6

Dual-walled insulation for precise, quick temperature changes

Steel construction and porcelain-enameled finish for durability

RapidFire lid damper boosts air flow to quickly reach high heat

One-Touch Cleaning System™ for hassle-free cleanup

Adjustable grate for low and slow smoking or high-heat searing

Gourmet BBQ System ready, cookware sold separately

Stainless steel wire basket and tabletop

Snap-Jet™ Gas Ignition System

20-lb. capacity fuel bag

Grill Cover Sold Separately (8030410)



Ace No. 8406688

PERFORMER 22"

Cooks up to 13 burgers

Gourmet BBQ System hinged cooking grate

Easy to clean: One-Touch Cleaning System™ and removable ash catcher

Fold-down table and Tuck-away™ lid holder

Grill Cover Sold Separately (8406209)

Ace No. 8406720

PERFORMER PREMIUM 22"

Cooks up to 13 burgers

Gourmet BBQ System hinged cooking grate

Heavy-duty steel cart frame, two char-basket fuel holders and Tuck-away™ lid holder

Removable backlit LCD cook timer

Easy to clean: One-Touch Cleaning System™ and removable ash catcher

Weather-protected charcoal storage

Grill Cover Sold Separately (8406316)

Ace No. 8406704

PERFORMER DELUXE 22"

Cooks up to 13 burgers

Gourmet BBQ System hinged cooking grate

Heavy-duty steel cart frame, two char-basket fuel holders and Tuck-away™ lid holder

Removable backlit LCD cook timer

Easy to clean: One-Touch Cleaning System™ and removable ash catcher

Weather-protected charcoal bin storage

Grill Cover Sold Separately (8406316)

Additional Grills:
Copper (8406779)
Crimson (8406787)
Green (8406795)

Ace No. 8882417

SNAPCHECK THERMOMETER

Fast: Displays temperature in 3 seconds

Precise: +/- 0.7°F accuracy, from -40°F to 392°F



**PREMIUM GRILL COVER FOR 22"
ACE NO. 8406191**

UV inhibitors in fabric resist fading
Breathable, weather-resistant fabric
protects grill from the elements

Fastening straps keep
the cover in place



**STAINLESS STEEL GRILL TOOL SET 2 PC
ACE NO. 8381386**

Includes: Stainless Steel Spatula and Tongs
Hands-free locking tongs
Ergonomic design and soft-touch
grip provide excellent control



**RAPIDFIRE CHIMNEY STARTER
ACE NO. 8211369**

Convenient and quick way to light charcoal
Two-handle design provides more control
when pouring lit charcoal
Durable construction for longevity
Works best with lighter cubes



**INSTANT READ THERMOMETER
ACE NO. 8531709**

Fast, accurate readings in
Fahrenheit or Celsius
Auto shutoff after 10 minutes
of inactivity
Digital temperature
readout



**22" MASTER-TOUCH® GRILL
Ace No. 8034971**

Cooks up to 13 burgers
Gourmet BBQ System hinged cooking grate
Easy to Clean: One-Touch Cleaning System™
and Ash Catcher
Lid Hook - allows lid to hang on
the side of the grill
Built-In Lid Thermometer
Black (8406571)



Ace No. 8352460

**STAINLESS STEEL BLACK
GRILL BRUSH 1 PK**

Wide brush head cleans large surfaces
quickly and efficiently

Thick stainless steel bristles resist wear

Ergonomic handle provides control and
leverage when cleaning cooking grates



Ace No. 8438863

SEARING GRATE

Porcelain-enameled, cast-iron sear grate
prevents food from sticking and creates
professional cross-hatch sear marks

Fits into the Gourmet BBQ system cooking
grate so that it stays in place while grilling

Easy cleanup with soap and water



Ace No. 8212441

DELUXE GRILLING PAN

Great for charcoal or gas grills

Ideal for fish fillets or other delicate items
that may fall between the grates

Wide carrying handles

Can be easily cleaned with soap and water



Ace No. 8212250

LIGHTER CUBES

Lights easily even when wet

Odorless and nontoxic

Use for lighting charcoal grills, smokers,
fireplaces or campfires

Box of 24 cubes



Ace No. 8105199

18" ORIGINAL KETTLE® GRILL

Cooks up to 9 burgers

Cooking Grate: Plated Steel

Easy to Clean: One-Touch Cleaning System™ and Ash Catcher

Lid Hook: Allows Lid to Hang on the Side of the Grill

Ace No. 8105207

22" ORIGINAL KETTLE® GRILL

Cooks up to 13 burgers

Cooking Grate: Plated Steel

Easy to Clean: One-Touch Cleaning System™ and Ash Catcher

Lid Hook: Allows Lid to Hang on the Side of the Grill

Ace No. 8060195

22" ORIGINAL KETTLE® PREMIUM GRILL

ACE EXCLUSIVE COLOR: INDIGO

Cooks up to 13 burgers

Cooking Grate: Plated Steel, Hinged

Porcelain-enameled lid and bowl

Aluminized steel One-Touch Cleaning System™

Additional Colors: Black (8406605), Copper (8406167), Green (8406639), Crimson (8406621)

Ace No. 8406670

26" ORIGINAL KETTLE® PREMIUM GRILL

Cooks up to 15 burgers

Cooking Grate: Plated Steel, Hinged

Easy to Clean: One-Touch Cleaning System™ and Ash Catcher

Lid Hook: Allows Lid to Hang on the Side of the Grill

Built-In Lid Thermometer



Ace No. 85415

14" SMOKEY JOE® GRILL

Cooks up to 5 burgers

Compact and lightweight for grilling on the go

Porcelain-enameled lid and bowl retain heat and won't rust or peel

Dampers allow you to easily control the temperature inside your grill

Ace No. 87771

SMOKEY JOE® PREMIUM GRILL

Cooks up to 5 burgers

Compact and lightweight for grilling on the go

Porcelain-enameled lid and bowl retain heat and won't rust or peel

Dampers allow you to easily control the temperature inside your grill

Tuck-N-Carry™ lid lock allows for carrying and also lowers to double as a lid holder

Ace No. 8257636

18" JUMBO JOE® GRILL

Cooks up to 8 burgers

Compact and lightweight for grilling on the go

Porcelain-enameled lid and bowl retain heat and won't rust or peel

Dampers allow you to easily control the temperature inside your grill

Tuck-N-Carry™ lid lock allows for carrying and also lowers to double as a lid holder



Ace No. 89670

GO-ANYWHERE® CHARCOAL GRILL

Cooks up to 6 burgers

Compact and lightweight for grilling on the go

Porcelain-enameled lid and bowl retain heat and won't rust or peel

Dampers allow you to easily control the temperature inside your grill

The lid locks for easy portability

Ace No. 8382608

GO-ANYWHERE® GAS GRILL

Cooks up to 6 burgers

Compact and lightweight for grilling on the go

Porcelain-enameled lid and bowl retain heat and won't rust or peel

Push button ignition

The lid locks for easy portability





Ace No. 8061617

SMOKEFIRE EX4 (2ND GEN) WOOD FIRED PELLET GRILL

Grill more with two large levels of grilling space

Weber porcelain-enamel finish helps prevent rusting and cracking

DC-powered engine, specially designed to prevent auger jams

Stainless steel Flavorizer Bars to distribute even heat across the cooking area

Weber Connect smart grilling technology

Grill Cover Sold Separately (8029934)

Ace No. 8061616

SMOKEFIRE EX6 (2ND GEN) WOOD FIRED PELLET GRILL

Grill more with two large levels of grilling space

Weber porcelain-enamel finish helps prevent rusting and cracking

DC-powered engine, specially designed to prevent auger jams

Stainless steel Flavorizer Bars to distribute even heat across the cooking area

Weber Connect smart grilling technology

Grill Cover Sold Separately (8029938)

Ace No. 8041811

SMOKEFIRE FOLDING SIDE TABLE

Adds 200 sq. in. of work space and holds up to 40 lb.

Built-in bottle opener

Ace No. 8046476

SMOKEFIRE FOLDING FRONT SHELF (EX4)

Attaches to the front of SmokeFire, adding 250+ sq. in. of work space and holds up to 20 lb. of food

Ace No. 8041809

SMOKEFIRE FOLDING FRONT SHELF (EX6)

Attaches to the front of SmokeFire, adding 350+ sq. in. of work space and holds up to 20 lb. of food

Ace No. 8046477

CUTTING BOARD

Perfect size for prepping and serving on your side table

Knife-friendly and dishwasher safe for easy cleanup

Fits and stores in the SmokeFire folding side table



Ace No. 8381063

14" SMOKEY MOUNTAIN COOKER™ SMOKER

Two plated steel cooking grates

Porcelain-enameled bowl, lid, center section and water pan

Charcoal chamber

Built-in lid thermometer

Silicone temperature grommet

Four rust-resistant aluminum dampers

Grill cover included

Ace No. 8201147

18" SMOKEY MOUNTAIN COOKER™ SMOKER

Two plated steel cooking grates

Porcelain-enameled bowl, lid, center section and water pan

Charcoal chamber

Built-in lid thermometer

Silicone temperature grommet

Four rust-resistant aluminum dampers

Grill cover included

Ace No. 8233306

22" SMOKEY MOUNTAIN COOKER™ SMOKER

Two plated steel cooking grates

Porcelain-enameled bowl, lid, center section and water pan

Charcoal chamber

Built-in lid thermometer

Silicone temperature grommet

Four rust-resistant aluminum dampers

Grill cover included





**STAINLESS STEEL BLACK
GRILL BRUSH 12"
ACE NO. 8380982**

Wide brush head cleans large surfaces quickly and efficiently
Shorter sides can be used for edges and dislodging debris between grates
Thick stainless steel bristles resist wear
Ergonomic handle provides control and leverage when cleaning cooking grates

**DELUXE GRILLING BASKET
ACE NO. 8486516**

Flexible wire accommodates a variety of food sizes and shapes
Handles on each side for easy on and off the grill
Fits Weber Q® and larger gas grills, Smokey Joe® and larger charcoal grills

**WEBER TRAVELER
PORTABLE GAS GRILL
Ace No. 8060197**

Cooks up to 15 burgers/13,000 BTUs
Porcelain-Enameled, Cast-Iron Cooking Grates
Compact fold for minimal storage space and easily fits in the trunk of a car
Grill is attached to the cart so that you're up and grilling in no time
Large grilling area so that the entire meal is ready to eat at the same time



Ace No. 8379224

Q® 1000

Cooks up to 6 burgers

Porcelain-Enameled,
Cast-Iron Cooking Grates

Compact design

Removable catch pan

Reliable electronic
ignition

Operates on disposable
LP cylinder (sold
separately)

Can operate on a 20-lb.
cylinder using the Weber
Q® adapter hose

Use on outside tabletop
or portable Q® Cart (sold
separately)

Ace No. 8394777

Q® 1200

Cooks up to 15 drumsticks/
8,500 BTUs

Porcelain-Enameled,
Cast-Iron Cooking Grates

Infinite control burner
valve

Removable catch pan

Reliable electronic
ignition

Operates on disposable
LP cylinder (sold
separately)

Can operate on a 20-lb.
cylinder using the Weber
Q® adapter hose

Use on outside tabletop
or portable Q® Cart (sold
separately)

Additional Colors:
Black (8432536)
Titanium (8379422)
Green (8432494)
Blue (8432627)
Orange (8432569)

**Ace No. 8379877/
8379869**

Q® 2200/Q® 2000

Cooks up to 10 burgers

Porcelain-Enameled,
Cast-Iron Cooking Grates

Folding side tables

Reliable electronic ignition

Operates on disposable LP
cylinder (sold separately)

Can operate on a 20-lb.
cylinder using the Weber
Q® adapter hose

Use on outside tabletop
or portable Q® Cart (sold
separately)

Ace No. 8379885

Q® 3200

Cooks up to 14 burgers

Porcelain-Enameled,
Cast-Iron Cooking Grates

Cart included

Removable folding side
tables

Reliable electronic ignition

Handle light, warming rack

Ace No. 8380990

Q® 1400 – ELECTRIC

Cooks up to 6 burgers

Porcelain-Enameled,
Cast-Iron Cooking Grates

Compact design

Infinite heat control settings

6-foot grounded cord

Use on outside tabletop
or portable Q® Cart (sold
separately)

Ace No. 8381048

Q® 2400 – ELECTRIC

Cooks up to 12 burgers

Porcelain-Enameled,
Cast-Iron Cooking Grates

Compact design

Infinite heat control
settings

6-foot grounded cord

Use on outside tabletop
or portable Q® Cart (sold
separately)

Ace No. 8381261

PORTABLE CART





BRONZE PRO 575 GRILL
ACE NO. 8016779

FRONT SHELF
ACE NO. 8484198

Fits the Pro 575 and Pro 22 Series
and Ironwood 650
4.72"H x 12.76"W x 26.5"L

PRO 575 GRILL COVER
ACE NO. 8016830

Fits the Pro 575 and Pro 22 Series
35.12"W x 42"H

PRO 575
Ace No. 8016781

Cooks up to 24 burgers/5 rib racks/
4 chickens

Pro D2 Controller
WiFIRE® Technology
D2® Direct Drive
Turbotemp®
Meat Probe

18-Lb. Hopper Capacity
572 Sq. In. Grilling Area

RESERVE BLEND PELLETS
ACE NO. 8015887

Ace Exclusive
20-Lb. Bag
Blend Flavors: Oak, Cherry
and Apple

DRIP TRAY LINER
ACE NO. 8022005

21.1"L x 15.43"W
Aluminum 5 Pack



Ace No. 8060834
**GRILL INSULATION
BLANKET**

Fits the Pro 575 and
Pro 22 Series



Ace No. 8030420
**TRAERGER® PELLET
SENSOR**

Compatible with all
WiFIRE® enabled grills



Ace No. 8680142
**STAINLESS STEEL
GREASE BUCKET**

5.5"L x 5.5"W

Compatible with all
full-size Traeger® grills



Ace No. 8797193
**MAGNETIC GRILL
HOOKS 3 PC**

3 Pack

Hang all your Traeger®
accessories from your grill



Ace No. 8686818
**DIGITAL MEAT
THERMOMETER**

Checks temperatures up to
572°F

Never get caught cooking
without one of these!



Ace No. 8687048
**TRAERGER® ALL-
NATURAL CLEANER**

950ml



Ace No. 8016780

PRO 780

Cooks up to 34 burgers/6 rib racks/6 chickens

Pro D2 Controller

WiFIRE® Technology

780 Sq. In. Grilling Area

Grill Master Tools: Grill Cover (8016829), Drip Tray Liners (8023039), Folding Front Shelf (8947269)

Ace No. 8016774

BRONZE PRO 780

Cooks up to 34 burgers/6 rib racks/6 chickens

Pro D2 Controller

WiFIRE® Technology

780 Sq. In. Grilling Area

Grill Master Tools: Grill Cover (8016829), Drip Tray Liners (8023039), Folding Front Shelf (8947269)

Ace No. 8474793

PRO 22

Cooks up to 24 burgers/5 rib racks/4 chickens

Digital Pro Controller

Dual Meat Probes

572 Sq. In. Grilling Area

Grill Master Tools: Grill Cover (8016830), Drip Tray Liners (8022005), Folding Front Shelf (8484198)



Ace No. 8474884

PRO 34

Cooks up to 40 burgers/7 rib racks/8 chickens

Digital Pro Controller

Dual Meat Probes

884 Sq. In. Grilling Area

Grill Master Tools: Grill Cover (8484289), Drip Tray Liners (8680506), Folding Front Shelf (8484271)

Ace No. 8015015

RANGER

Cooks up to 6 burgers/1 rib rack/10 hot dogs

Digital ARC Controller

Cast Iron Griddle Included

8-Lb. Hopper Capacity

184 Sq. In. Grilling Area

Grill Master Tools: Grill Cover (8015003), Multi Tool (8014181), Drip Tray Liners (8015626)

Ace No. 8037837

TAILGATER 20

Cooks up to 2 burgers/3 rib racks/12 chickens

Digital ARC Controller

8-Lb. Hopper Capacity

300 Sq. In. Grilling Area

Grill Master Tools: Grill Cover (8484263), Drip Tray Liners (8680498), Folding Front Shelf (8484313)

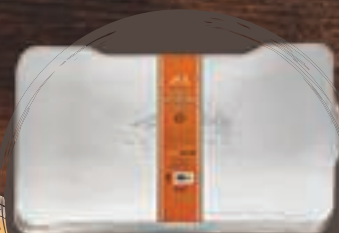
PRO TIP:

Fire brings the true flavor of your food to the forefront. Cooking with all-natural hardwood makes your best recipes taste even better, and with Traeger's 6-in-1 versatility, you can grill, smoke, bake, roast, braise and BBQ like a true backyard boss.



RESERVE BLEND PELLETS
ACE NO. 8015887

Ace Exclusive
20-Lb. Bag
Blend Flavors: Oak, Cherry
and Apple



DRIP TRAY LINER
ACE NO. 8023037
14.75"L x 28.75"W

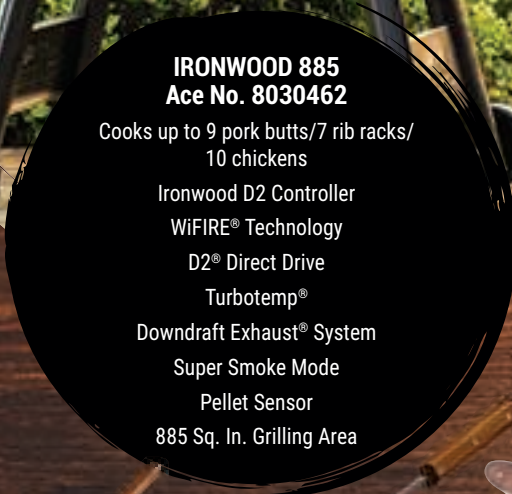


IRONWOOD 885 GRILL COVER
ACE NO. 8019859
54"W x 43.2"H



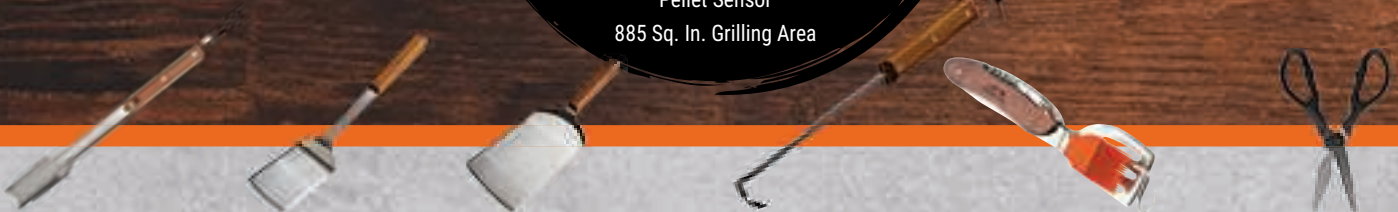
FRONT STEEL SHELF
ACE NO. 8947269

Fits the Ironwood 885
and Pro 780



IRONWOOD 885
Ace No. 8030462

Cooks up to 9 pork butts/7 rib racks/
10 chickens
Ironwood D2 Controller
WiFIRE® Technology
D2® Direct Drive
Turbotemp®
Downdraft Exhaust® System
Super Smoke Mode
Pellet Sensor
885 Sq. In. Grilling Area



Ace No. 8687014

BBQ TONGS

Stainless steel construction
for durability
Strong teak wood handle

Ace No. 8687063

BBQ SPATULA

Stainless steel construction
for durability
Strong teak wood handle

Ace No. 8687030

XXL BBQ SPATULA

Stainless steel construction
for durability
Strong teak wood handle

Ace No. 8686792

BBQ PIG TAIL

Stainless steel construction
for durability
Strong teak wood handle

Ace No. 8014181

BBQ MULTI TOOL

Includes portable-sized spatula, pig
tail, basting brush and corkscrew

Ace No. 8038370

BBQ SHEARS

Nonslip grip
Take-apart design for easy
cleaning

Ace No. 8464281

TAEGER® CHICKEN LEG HANGER

Holds up to 12 legs

Ace No. 8464455

TAEGER® CHICKEN THRONE

Porcelain
Dishwasher safe

Ace No. 8464240

TAEGER® RIB RACK CHROME

Holds 8 full racks of ribs

Ace No. 8680159

DRIP BUCKET LINER

5 Pack
Easy cleanup

Ace No. 8051408

BBQ CLEANING BRUSH

Designed to clean cooled grill grates
Replacement brushes available



Ace No. 8030466

IRONWOOD 650

Cooks up to 6 pork butts/5 rib racks/8 chickens

Ironwood D2 Controller

WiFIRE® Technology

D2® Direct Drive

Turbotemp®

Downdraft Exhaust® System

Super Smoke Mode

Pellet Sensor

650 Sq. In. Grilling Area

Grill Master Tools: Grill Cover (8016831), Drip Tray Liners (8022007), Folding Front Shelf (8484198)

Ace No. 8024035

TIMBERLINE 850

Cooks up to 6 pork butts/8 rib racks/9 chickens

Timberline D2 Controller

WiFIRE® Technology

Double Wall Stainless Interior

Turbotemp®

Downdraft Exhaust® System

Super Smoke Mode

Pellet Sensor

850 Sq. In. Grilling Area

Grill Master Tools: Cover (8017711), Drip Tray Liners (8024281), Grease Bucket Liner (8017710)

Ace No. 8024034

TIMBERLINE 1300

Cooks up to 12 pork butts/15 rib racks/12 chickens

Timberline D2 Controller

WiFIRE® Technology

Double Wall Stainless Interior

Turbotemp®

Downdraft Exhaust® System

Super Smoke Mode

Pellet Sensor

1300 Sq. In. Grilling Area

Grill Master Tools: Cover (8017709), Drip Tray Liners (8019858), Grease Bucket Liner (8017710)

PRO TIP:

The future of grilling has arrived with Traeger's WiFIRE® technology. Take command of your grill from your couch or on the go — change temperatures, monitor your food temps and set timers anytime, anywhere with the Traeger App.



The Big Green Egg® is the highest-quality, most versatile and simplest-to-use outdoor cooker of all time, offering more cooking options than all other conventional cookers combined. Grill, roast, sear, smoke or bake – the EGG will exceed all of your culinary expectations, and a Big Green Egg is as convenient, easy to use and maintenance free as it gets! With a lifetime warranty and no burners, power cords, insulating blankets or pellet augers to worry about, the EGG is simple, efficient and hassle free – and with seven convenient sizes to choose from, there is an EGG to fit any lifestyle!



VERSATILITY

From appetizers and entrees to desserts, the Big Green Egg will exceed all of your expectations for culinary perfection.



QUALITY

When you invest in a Big Green Egg, you are going to take home the highest-quality outdoor cooker ever made.



EASE OF USE

The EGG heats up and is ready to cook in minutes. An EGG will never rust, jam or wear out – and has a lifetime warranty.



COMMUNITY

With an EGG, you are part of our community of friends, family, well-fed neighbors and a passionate worldwide audience.



GRILL COVER ACE NO. 8039584

Heavy-duty, weatherproof material resists fading
Ventilated to prevent moisture buildup
Cover for Nest and Handler XL as well



INSTANT READ DIGITAL FOOD THERMOMETER ACE NO. 8025749

Quick, high-accuracy readings of food temperatures
Measures -40°F to 572°F
(-40°C to 300°C)
Auto On/Off



NEST FOR LARGE EGG (HEAVY-DUTY DESIGN, WITH CASTERS - 2 LOCKING) ACE NO. 8695447

Raises your EGG to a comfortable cooking height while allowing for easy mobility
Includes two locking and two non-locking casters



PROFESSIONAL-GRADE BBQ TOOL SET W/ WOOD HANDLES (SPATULA, TONGS, BRUSH) ACE NO. 8696353

Stainless steel shafts keep heat safely at a distance, and solid wood handles provide a comfortable and secure grip
Set of Three: BBQ Tongs, Grill Spatula and BPA-Free Basting Brush

LARGE EGG Ace No. 8695280

Cooks up to 20-lb. turkey/12 burgers/
6 chickens vertically/8 steaks/
7 racks of ribs vertically
Weighs 162 lb.

Most popular size!

Can accommodate the needs of most families and gatherings of friends



FOLDING EGG MATES (PAIR) ACE NO. 8034154

Mortise and tenon joints – strong, durable and affected little by expansion or contraction due to temperature and humidity changes
17.5" x 11" (44 cm x 28 cm)



Ace No. 8024298

2XL EGG

Cooks up to 35–40 burgers/14–16 whole chickens/18–20 steaks/20 racks of ribs vertically/1 crisp suckling pig

Biggest Green Egg, weighs 375 lb.

Can easily handle your family reunion or cookouts with large groups



Ace No. 8695298

XLARGE EGG

Cooks up to 2 20-lb. turkeys/24 burgers/11 whole chickens/12 steaks/12 racks of ribs vertically

Weights 219 lb.

Can easily accommodate meals for large families and cookouts with all your friends



Ace No. 8695256

MEDIUM EGG

Cooks up to an 18-lb. turkey/6 burgers/3 chickens vertically/4 steaks/4 racks of ribs vertically

Weights 114 lb.

Perfectly sized for smaller families and couples



Ace No. 8695322

SMALL EGG

Cooks up to a 12-lb. turkey/4 burgers/1 chicken vertically/2 steaks/1 rack of ribs vertically

Weights 80 lb.

Big flavor in a compact package, this Egg is an easy fit for smaller patios and balconies. Is often used as a companion for the 2XL, XL, Large or Medium Egg to allow the preparation of several courses at once!



Ace No. 8695314

MINIMAX EGG

Cooks up to a 12-lb. turkey/4 burgers/1 chicken vertically/2 steaks/1 rack of ribs vertically

Weights 76 lb.

The MiniMax is perfect for camping, poolside and tailgating at the ballgame. MiniMax is built to perform and is ready to travel to wherever your culinary interests take you!



Ace No. 8695306

MINI EGG

Cooks up to 2 chicken breasts/2 pork chops/1 steak

Weights 39 lb.

This Egg is the solution at picnics and tailgating! It is also a popular size for grilling on apartment balconies or camping and boating.



Ace No. 8695355

**SPEEDILIGHT®
NATURAL CHARCOAL
STARTERS**

Starts EGG easily and is odorless and tasteless, with no chemical aromas or residue. Clean, safe and ready to use without the need for any lighter fluid.

24 All-natural blocks per box



Ace No. 4000373

**REFILLABLE BUTANE
CHARCOAL EGGNITER®**

Ignite lump charcoal in just minutes with the NEW Refillable Butane Charcoal EGGniter®. Adjustable torch flame with an air blower to both ignite and boost your fire. The Butane EGGniter is a clean, quick and safe way to light your EGG, campfire or wood fireplace.

Pro Tip: Use as a cooking tool for caramelizing sugars, browning meringue or melting cheese on French onion soup gratinee!



**Ace No. 8025190 (L)/
8025068 (XL)**

**5-PIECE
EGGSPANDER KIT**

The NEW Big Green Egg EGGspander system facilitates an extensive variety of cooking setups to easily utilize the full versatility of the EGG

Includes convEGGtor Basket, 2-Piece Multi-Lever Rack and Two Stainless Half Grids



Ace No. 8696197

**CUSTOM STAINLESS
BBQ TOOL SET (SPATULA,
TONGS, BRUSH)**

Extra long stainless steel shafts keep heat safely at a distance, and contoured handles provide a comfortable and secure grip

Set of Three: BBQ Tongs, Grill Spatula and Basting Brush (includes a replacement Basting Brush head)



Ace No. 8025753

**EGG GENIUS WIFI
ENABLED TEMPERATURE
CONTROLLER**

The EGG Genius effortlessly controls the temperature of your EGG through your smartphone, tablet or computer

Receive alerts when your cook is finished or when the EGG temperature is too high or low



**Ace No. 8025197 (L)/
8025796 (XL)**

**HALF MOON
CONVEGGTOR**

The Half Moon Baking Stone turns your EGG into a fire brick oven, great for making breads, desserts and other baked items

Cook indirect on one half of the cooking grid, while keeping the other half of the grid available for roasting meats or vegetables



NEST PACKAGE

EGG Nests are designed to raise your EGG to a comfortable cooking height while allowing for easy mobility. Made of durable powder-coated steel, the Nests feature a bracer bar and two locking casters and are designed and manufactured in the USA exclusively for Big Green Egg.

Package Includes: EGG, Nest, convEGGtor®, Grid Gripper, Ash Tool, BGE Charcoal

XL EGG (8797979)
LARGE EGG (8797946)
MEDIUM EGG (8797938)
SMALL EGG (8797987)



INTEGRATED NEST+HANDLER PACKAGE

The Big Green Egg intEGGrated Nest+Handler merges two great products (EGG Nest and Handler) for a strong, stable, mobile base for the EGG. Featuring welded joints, there is minimal visible hardware for a cleaner look, and the curved and angled lines accentuate the iconic shape of the EGG.

Package Includes: EGG, intEGGrated Nest+Handler, convEGGtor®, Grid Gripper, Ash Tool, BGE Charcoal

XL EGG (8039982)
LARGE EGG (8039983)
MEDIUM EGG (8039995)



ACACIA TABLE PACKAGE

Big Green Egg Acacia Hardwood Tables are fabricated from all-natural, kiln-dried solid planks of genuine acacia wood, which is highly regarded for its excellent weathering characteristics.

Package Includes: EGG, Acacia Wood Table, Table Nest, convEGGtor®, Grid Gripper, Ash Tool, BGE Charcoal

XL EGG (8797953)
LARGE EGG (8797961)



MODULAR NEST PACKAGE

Build an outdoor workspace that can be tailored for size and style. Start now and add on at a later date. All inserts are standardized – the same insert will fit into the top frame and lower shelf frame.

Package Includes: EGG, Modular Nest with Stainless Steel Grid, Modular Side Table, Three Acacia Wood Inserts, convEGGtor®, Grid Gripper, Ash Tool, BGE Charcoal

XL EGG (8039985)
LARGE EGG (8039993)



49" ISLAND PACKAGE

Designed and engineered to work perfectly with your Big Green Egg for years of enjoyment! The 49" Custom Cooking Island fits smaller spaces. It offers the convenience of a heavy-duty sliding shelf and features high-quality aluminum and steel construction.

Package Includes: EGG, 49" Cooking Island, convEGGtor®, Grid Gripper, Ash Tool, BGE Charcoal

XL EGG (8039994)
LARGE EGG (8039996)



76" ISLAND PACKAGE

Designed and engineered to work perfectly with your Big Green Egg for years of enjoyment! The 76" Custom Cooking Island provides an impressive working surface. It features a heavy-duty sliding shelf and high-quality aluminum and steel construction.

Package Includes: EGG, 76" Cooking Island, convEGGtor®, Grid Gripper, Ash Tool, BGE Charcoal

XL EGG (8039987)
LARGE EGG (8039994)





GRILL COVER ACE NO. 8338246

36" Blackstone® Griddle with this heavy-duty polyester cover

Double Layer Fabric with Reinforced Corners

Water-Resistant

Weather-Resistant to protect against Extreme Conditions

Fits models: 1554, 1560, 1565, 1825, 1836 and other 36" Griddle Units with lower side shelves



BREAKFAST KIT ACE NO. 8535452

This kit saves time, dishes and cleanup and helps makes you look like a pro at making breakfast

Blackstone Batter Dispenser holds up to 4 cups of batter

Blackstone Bacon Press is made of preseasoned cast iron

4" diameter egg rings for making eggs and pancakes

Easy cleanup

BLACKSTONE® LIQUID PROPANE OUTDOOR GRIDDLE BLACK 4 BURNERS Ace No. 8037617

Solid rolled steel and created to be versatile and suitable for all types of gatherings

Restaurant-style cooking

60,000 BTUs controlled low to high for versatile cooking options

Blackstone's new rear grease management system to help eliminate mess

Griddle, bottle opened towel bar and tool holder



TOOL KIT ACE NO. 8338261

Essential tools for your griddle. Perfect for cooking and cleaning up!

2 Commercial-Grade Dispensers for Liquids of Your Choice to Enhance your Griddle Cooking Experience

2 Commercial-Grade Spatulas, One with Perforation

1 Chopper/Scraper to Dice Foods or Scrape Griddle Clean

1 Custom Blackstone Cookbook Sampler with 34 Popular Recipes



Ace No. 8061609

36" GRIDDLE W/CABINET

Cooks up to: 28 burgers/16 steaks/72 hot dogs

Feeds 2 to 20

36" griddle comes with amazing features, like a built-in cabinet and drawers for storage

Four independently controlled heat zones offer 60,000 BTUs of heat to give you all the power you need to serve an entire crowd with restaurant-quality steaks

The paper towel holder, side shelf hooks and magnetic tool bar will all make griddling that much more convenient with your 36" Griddle Cooking Station

Features a hood for added protection and convenience while cooking

RESTAURANT-STYLE COOKING – With 756 sq. in. of flat top griddle capacity, this griddle is perfect for breakfast, lunch and dinner. Cook eggs, pancakes, quesadillas, grilled cheese, steak, potatoes, Teppanyaki style foods and more. Everything you can cook on a traditional grill and a thousand things you can't.

Rolled Carbon 10-Gauge Steel Griddle Top

Ace No. 8061610

28" GRIDDLE CART WITH HOOD

Cooks up to: 18 burgers/12 steaks/44 hot dogs

Feeds 2 to 10

This two-burner cooking station is exactly what you need to enjoy better tasting food and spend less time cooking it

New updated Culinary Control Knobs and Handles

Pivoting Paper Towel Holder

48,000 BTUs Catented Heat Control Baffle System Culinary Style

Built with industrial materials for durability and optimal heat distribution

Ace No. 8061615

TAILGATOR COMBO GRILL

Cooks up to: 10 burgers/4 steaks/20 hot dogs

Feeds 2 to 6

Quick and Convenient Scissor "Roll & Go" Leg Design

17" Griddle Paired with Removable 17" Grill Box w/Cast Iron Grates for multi-use options

You can make any tailgate, campsite or backyard outing the event of the season with 30,000 BTUs of firepower

Versatile and convenient, excellent for the outdoors and use at home

Convenient Scissor "Roll & Go" Leg Design. Easy portable setup, no assembly required, ready to use in seconds

Blackstone® combo grill and griddle goes where you go for delicious food every time

Burner box sits atop grate for use

Char-Broil



**CHAR-BROIL®
SMOKER BOX
ACE NO. 8011458**

Big time smokers love our cast iron grill smoker box

Just add your favorite wood chips and the lid automatically vents smoke and prevents wood from catching on fire

You can add juices, water or even marinades to wood chips for a little extra zing

The cast iron retains heat well and can withstand hotter grill temperatures better



**OKLAHOMA JOE'S® HICKORY
WOOD CHIPS ACE NO. 8011466**

Heat up your grill with Oklahoma Joe's® Hickory Wood Smoker Chips

Cut from all-natural wood to impart rich, smoky flavor to your grill meat

These chips can be used in charcoal, electric or gas grills

Put directly on grill grates when using an infrared grill

Place in smoker box when using an electric or gas grill

**PERFORMANCE 4B
CART STAINLESS
Ace No. 8060203**

Cooks up to 24 burgers

Main Burners: 36,000 BTUs per hour/
Side Burners: 10,000 BTUs per hour

Exclusive Stainless Steel finish for increased style and durability

Porcelain-coated cast-iron grates are rust-resistant and made to last

Stainless Steel burners emit flame from the top to allow for even cooking

**GRILL COVER
ACE NO. 8475238**

Longer Side Straps for a secure fit
18 mm thickness polyester fabric with Sun Fade Protective Liner
Sealed Seams for water resistance
UV Protection for fade resistance
2-Year Warranty

Ace No. 8011445

**CHAR-BROIL® SAFER
REPLACEABLE HEAD
GRILL BRUSH**

Bright red, nylon bristles are 5X thicker for high visibility

Rugged, grit-infused bristles for increased cleaning ability (no metal)

Ace No. 8011444

**CHAR-BROIL® SAFER
GRILL BRUSH
REPLACEMENT HEAD**

Replacement brush head fits SAFER Replaceable Head Grill Brush (8011445)

Laboratory tested to 15,000 cycles with no breakage or fallout for durability

Ace No. 8025430

**OKLAHOMA JOE'S®
CHARCOAL LIGHTER**

Ergonomic handle with push-button ignition

Safety lever with lock prevents unintentional gas flow

Fast to light and easy to store

Use with 1 lb. propane tank, sold separately

Ace No. 8025387

**OKLAHOMA JOE'S®
MARINADE INJECTOR**

The Oklahoma Joe's® Trigger Injector makes marinating food more convenient than ever before

Dial-a-volume feature makes it easy to manage marinade flow while continual refilling eliminates risk for cross-contamination

Substantially faster than conventional injectors

Ace No. 8025436

**OKLAHOMA JOE'S®
STAINLESS 3 PC KNIFE SET**

The Oklahoma Joe's® Blacksmith 3-Piece Knife Set offers the reliability and versatility necessary to trim, slice and more when prepping

All knives feature a full-tang, single blade varying in thickness and edging

Supported by a thick bolster and riveted construction, you can count on these knives to cut your meat with ease, before, during and after cooking

Includes a protective knife roll



Ace No. 8022492

PERFORMANCE 6B 550 CART

Can cook up to 32 burgers

Main burner 45,000 BTUs/Sear Burner 15,000 BTUs/Side Burner 10,000 BTUs

Stainless steel burners emit flame from the top to allow for even cooking

Porcelain-coated grease pan is durable and can be removed for easy cleaning

This grill features an electronic ignition to instantly ignite the burner – it's simple and practical

Equipped with a 15,000 BTUs Sear Burner for locking in juices and grilling up flavorful steaks

Grill Cover (8475238)



Ace No. 8511834

AMERICAN GOURMET 280 2B

Can cook up to 12 burgers

20,000 BTUs

Stainless steel burners are durable and rust-resistance

Porcelain-coated grates prevent food from sticking and are easy to clean

Metal side shelves for added food prep space

Piezo ignition for fast and reliable startups

Grill Cover (8475303)



Ace No. 8511867

AMERICAN GOURMET 360 3B

Can cook up to 18 burgers

30,000 BTUs

Stainless steel burners are durable and rust-resistance

Porcelain-coated grates prevent food from sticking and are easy to clean

Metal side shelves for added food prep space

Wheels for easy portability

Grill Cover (8475303)



Ace No. 8060205

PERFORMANCE TRU-IR 2B

Can cook up to 12 burgers

18,000 BTUs

TRU-Infrared™ cooking technology prevents flare-ups, delivers even heat and cooks up to 50% juicier food

Lid-mounted temperature gauge to easily monitor the inside temperature of your grill

Folding side shelves are Gear Trax™ enabled for extra workspace with custom options

Porcelain-coated steel grates are durable, rust-resistant and easy to clean

Grill Cover (8475303)



Ace No. 8060202

PERFORMANCE TRU-IR 4B

Can cook up to 18 burgers

Main burner 25,000 BTUs
Side Burner 10,000 BTUs

TRU-Infrared™ cooking technology prevents flare-ups, delivers even heat and cooks up to 50% juicier food

Lid-mounted temperature gauge to easily monitor the inside temperature of your grill

LED-illuminated control knobs for ambient light

Porcelain-coated steel grates are durable, rust-resistant and easy to clean

Grill Cover (8475238)



Ace No. 8398240

TRU-IR PATIO BISTRO GAS

Includes stainless steel grates and a warming rack

The TRU-Infrared™ system delivers juicy flavor and even heat without flare-ups

Lid-Mounted Temperature Gauge

Includes stainless steel grates and a warming rack

Add real wood chips or pellets directly on the grilling grate

Patio Bistro Grill Cover (8269284)



Ace No. 8269243

TRU-IR PATIO BISTRO ELECTRIC

High-quality electric grilling for convenience without the hassle of gas or charcoal

TRU-Infrared™ cooking technology prevents flare-ups, delivers even heat and cooks juicier food

Integrated control knob to adjust temperatures easily

Durable porcelain-coated grate is rust-resistant and easy to clean

Removable warming rack for indirect cooking or to keep food warm

Patio Bistro Grill Cover (8269284)



Ace No. 8034202

TABLETOP KETTLE

Take your grilling to tailgates, picnics or hiking

Portable convenience and easy cleanup

Durable reliability for flavorful charcoal grilling

Adjustable dampers allow for temperature control

Tabletop charcoal grilling for grilling almost anywhere



Ace No. 8030471

840 CHARCOAL BARREL

With 568 sq. in. of cooking space, you can grill for an army

It features adjustable fire grates and dampers, as well as a removable ash pan

The grates are cast iron, which are great for searing

It also has a swing-a-way warming rack, temperature gauge and a handy side shelf

Move the grill easily with rolling casters

Offset Smoker Cover (8475238)



Ace No. 8394835

625 CHARCOAL BARREL

This durable grill features adjustable fire grates and dampers, as well as a removable ash pan

The grates are cast iron, which are great for searing

It also has a swing-a-way warming rack, temperature gauge and a handy side shelf

Move the grill easily with rolling casters

Three included charcoal grates allow the smoker to pull double duty as a charcoal grill

Offset Smoker Cover (8475238)



Ace No. 8511677

SMOKER OFFSET 430

The Offset Smoker from Char-Broil® will get you smoking and cooking low and slow

Vertical pipe smokestack with adjustable dampers, a temperature gauge and an offset firebox to stoke the fire without losing heat

Porcelain-coated cooking grates for easy cleaning

Cool-touch handles and wheels for ease of mobility

Offset Smoker Cover (8694010)

PRO TIP:
DON'T PEEK! The only time you should lift the lid is for spritzing the meat or checking the internal temperature.



Ace No. 8394843

1280 OFFSET SMOKER

The Offset Smoker 1280 is perfect for big backyard BBQs

It features multiple dampers, a temperature gauge and extra grilling space in the offset chamber

A vertical smokestack with adjustable dampers helps control the smoke and heat

Easy ash clean-out door

Smoker Cover (8460396)



Ace No. 8000285

THE BIG EASY® OIL-LESS TURKEY FRYER

Prepare up to 16 lb. of turkey or other meats

16,000 BTUs

1 stainless steel burner

TRU-Infrared™ for grilling perfection

Includes cooker, cooking basket, lifter, meat thermometer and quick-start cooking guide



Ace No. 8394876

TABLETOP GAS GRILL

11,000 BTUs

The Char-Broil® Portable Gas Grill is designed for on-the-go, anywhere grilling

It features 190 sq. in. of cooking space and durable porcelain-coated grates that are rust-resistant and easy to clean



**OKLAHOMA JOE'S® BRONCO
DRUM SMOKER COVER ACE NO. 8025402**

Custom cover for the Oklahoma
Joe's® Bronco Drum Smoker

Heavy-duty rip-stop construction made from
fade and water-resistant material

Built-in hook and loop straps ensure a secure fit

Cover designed to fit Bronco Drum Smoker
with or without additional side shelf

Built-in hook and loop straps
ensure a secure fit

**OKLAHOMA JOE'S® BLACKSMITH HAWG LIFTER
ACE NO. 8025412**

Oversized head designed to pick up brisket,
Boston butt and other large cuts of meat

Shorter length offers maximum control

Riveted, full-tang handle delivers increased stability

Scalloped edge allows you to lift food from
underneath versus scraping across the bottom

Custom Oklahoma Joe's® notch to hang
or use as bottle opener

**OKLAHOMA JOE'S®
DRUM SMOKER TRIPLE GRATE
ACE NO. 8025434**

3-piece modular design lets you cook
an array of food, such as chicken legs,
seafood and vegetables

Durable, stainless steel construction

Grate lifter included to make grate
removal easy

Enhance the versatility of your Oklahoma
Joe's® Bronco Drum Smoker with the
Triple Grate

**OKLAHOMA JOE'S®
BRONCO DRUM SMOKER
Ace No. 8023745**

Cooks 2 8-lb. pork shoulders or 10 burgers

Unique airflow control system and sealed lid
allow for precise temperature management

Cooking grate and meat hangers enable a
custom smoking setup

Oversized, 8-lb. charcoal basket holds enough
fuel for over 10 hours of smoking time

Removable ash pan and porcelain-coated
components make cleanup easy

Heavy-gauge steel construction ensures
durability you can trust

**OKLAHOMA JOE'S® SMOKER GASKET
ACE NO. 8025431**

Seal your smoking chamber or firebox with the
Oklahoma Joe's® Gasket Seal

15-foot length can be cut to fit your smoker

Fiber-wool material withstands high
temperatures

You can count on this to prevent smoke
from leaking out of your smoke
chamber or firebox, while
withstanding intense heat



Ace No. 8025388

**OKLAHOMA JOE'S®
DRIP BUCKET**

Strong metal construction

Coated with
weather-resistant paint

Convenient 2-qt. capacity

Ace No. 8060207

**OKLAHOMA JOE'S®
PELLET BUCKET KIT**

Kit includes storage bucket
with filter, pellet scoop
and airtight lid

Weatherproof design
keeps hardwood pellets
fresh and dry

Wire-mesh filter separates
wood dust from the pellets for
a clean burn

Ace No. 8025385

**OKLAHOMA JOE'S®
SMOKING GLOVES**

Oklahoma Joe's® Smoking Gloves
deliver the protection you need
without weighing you down

Made of 100% leather, these gloves
offer functionality and comfort
without sacrificing style or quality

Ace No. 8025386

**OKLAHOMA JOE'S®
SMOKING APRON**

The Oklahoma Joe's® Smoking Apron
delivers the protection you need without
weighing you down

Made of lightweight canvas and leather,
this apron offers functionality and
comfort without sacrificing style or quality

The Smoking Apron is specially designed
to hold everything you need and
nothing you don't

Ace No. 8025396

**OKLAHOMA JOE'S®
SAUCE MOP**

Long handle for extended
reach within offset smokers

Removable, dishwasher safe
head for easy cleaning

Silicone bristles eliminate
concern over cotton fibers
getting in food

Custom bristle design to hold
the maximum amount of sauce



Ace No. 8511776

OKLAHOMA JOE'S® HIGHLAND OFFSET SMOKER

Cooks up to 32 lb. of beef/chicken/pork

Enjoy a classic smoking experience with the heavy-duty Oklahoma Joe's® Highland Offset Smoker

High-temperature, heavy-gauge steel construction

Fire access door and multiple dampers give you more control over your smoking experience

Highland Offset Smoker Cover
(8694010)



Ace No. 8531949

OKLAHOMA JOE'S® BANDERA OFFSET SMOKER

Cooks 48 lb. pork shoulder/11 slabs of ribs/32 lb. whole chicken

The unique design of the Oklahoma Joe's® Bandera® Vertical Offset Smoker gives you smoking versatility and maximizes food capacity

The vertical design enables efficient airflow through the smoke chamber

Built with durability in mind, this smoker is constructed with high-temperature, heavy-gauge steel and is equipped with nearly 1,000 sq. in. of smoking and grilling capacity

Bandera Smoker Cover
(8013255)



Ace No. 8028658

OKLAHOMA JOE'S® DELUXE PELLET SMOKER

Cooks 64 lb. pork shoulder/8 slabs of ribs/54 lb. whole chicken

Pit Control System offers smarter cooking with two distinct guidance features: Timer Mode: indicates when you've reached a set amount of time at your desired temp. Temp-Probe Mode: indicates when your food has reached its target internal temp.

Sear Mode can fire up red-hot temps over 650°F

Flex Grate and Flex Racks Systems integrate easily for superior versatility, allowing for a wide variety of configuration options

3-Piece Bucket Kit Available
(8060207)

Rider Deluxe Grill Cover (8037621)

PRO TIP:
Use a Marinade Injector! Prior to smoking, inject large pieces of meat with sauces that contain butter, herbs, beef or chicken broth using a marinade injector. The injected liquid will add flavor to the meat and keep it juicy, especially for long smoking times.



Ace No. 8060190

RIDER 600 PELLET GRILL

Cooks up to 4 slabs of ribs or 6 whole chicken

Equipped with the Flex Racks System, the Rider 600 can be easily customized with additional racks (sold separately) to create unique cooking setups

The easy-to-use, electric-powered Pit Control System can be set to cook for a desired amount of time or to hit an ideal internal temperature

Switching out and storing hardwood pellets is made simple with the 20-lb. capacity QuickDraw Hopper. For effortless wood-fired flavor in a convenient size, the Rider 600 packs a big punch.

Grill Master Tools: 3-Piece Bucket Kit Available (8060207) and Rider 600 Pellet Grill Cover (8060206)



Ace No. 8023684

OKLAHOMA JOE'S® RAMBLER TABLETOP

The Oklahoma Joe's® Rambler Tabletop Charcoal Grill takes the best parts of a heavy-duty charcoal grill and reworks them for maximum portability

The height-adjustable charcoal tray and large air dampers give you full control of your temperature, while thick cast-iron grates deliver sizzling sears

Because The Rambler is built with convenience in mind, it has a full-size, removable ash pan for quick and easy cleanup







Ace No. 803341

**NAVIGATOR 850
WOOD PELLET GRILL**

Cooks up to: 25 burgers | 3 chickens,
40 hot dogs | 5 rib racks

8-In-1 Cooking Versatility – Grill, Smoke,
Bake, Roast, Sear, Braise, Char-Grill, Bake

Dial-in Digital Control Board with LED
Readout

Pellet Cooking Temperature Range 180°
to 500°F

Open Flame Temperature up to 1000°F

Simple Slide-Plate Flame Broiler Lever for
Direct and Indirect Heat Cooking

28-Lb. Hopper Capacity with Pellet Door
Cleanout

Porcelain-Coated Cast Iron Cooking Grates

Items Included: Grill Cover, One Meat
Probe, Front Shelf and Side Shelf

Best-In-Class 5-Year Warranty



Ace No. 8033430

**NAVIGATOR 1150
WOOD PELLET GRILL**

Cooks up to: 38 burgers | 6 chickens,
54 hot dogs | 9 rib racks

8-In-1 Cooking Versatility – Grill, Smoke,
Bake, Roast, Sear, Braise, Char-Grill, Bake

Dial-In Digital Control Board with LED
Readout

Pellet Cooking Temperature Range 180°
to 500°F

Open Flame Temperature up to 1000°F

Simple Slide-Plate Flame Broiler Lever for
Direct and Indirect Heat Cooking

32-Lb. Hopper Capacity with Pellet Door
Cleanout

Porcelain-Coated Cast Iron Cooking Grates

Items Included: Grill Cover, One Meat
Probe, Front Shelf and Side Shelf

Best-In-Class 5-Year Warranty



Ace No. 8033429

**NAVIGATOR COMBINATION
GAS/WOOD PELLET GRILL**

Cooks up to: 38 burgers | 6 chickens,
54 hot dogs | 9 rib racks

8-In-1 Cooking Versatility – Grill, Smoke,
Bake, Roast, Sear, Braise, Char-Grill, Bake

Wood Pellet Grill and Smoker with Gas Grill
Combined

Dial-In Digital Control Board with LED
Readout

Pellet Cooking Temperature Range 180°
to 500°F

Simple Slide-Plate Flame Broiler Lever for
Direct and Indirect Heat Cooking

16-Lb. Hopper Capacity with Pellet Door
Cleanout

Porcelain-Coated Cast Iron Cooking Grates

Items Included: Grill Cover, Two Meat
Probes, Pellet to Gas Damper for Cold
Smoking, Front Shelf and Side Shelf

Best-In-Class 5-Year Warranty



Ace No. 8033427

7 SERIES VERTICAL SMOKER

Cooks up to: (6) 12" pizzas | (12) chickens,
(84) chocolate chips | (12) rib racks

10 Temperature Presets, Startup and
Cool-Down Cycles

Monitor Internal Temperatures with Digital
LED Readout

(6) Porcelain-Coated Cooking Grids

Pellet Cooking Temperature Range 100°
to 420°F

Large Front Window Eliminates Peek-A-Boo
Cooking

55-Lb. Hopper Capacity with Pellet Door
Clean-Out; allowing for up to 24 hour cooks

One Meat Probe Included

(4) Locking Caster Wheels

Removable Water Pan; can be filled with
your favorite marinades to add more flavor

Best-In-Class 5-Year Warranty



Ace No. 8037312

4 BURNER STANDARD GRIDDLE

Cooks everything from scrambled eggs and
pancakes to seared steak and fajitas

748 Sq. In. of Cooking Surface

Four separately controlled burners with
easy push and turn ignition

Four casters wheels for quick mobility

Handy fold-and-go design makes the
griddle portable for any occasion

62000-BTU stainless steel burners with
easy push and turn ignition - 4 burners

Uses Propane Gas

Includes the Pit Boss® Best-in-Class 5-Year
Warranty



Ace No. 8037313

4 BURNER DELUXE GRIDDLE

Cooks everything from scrambled eggs
and pancakes to seared steak and fajitas

748 Sq. In. of Cooking Surface

Four separately controlled burners with
easy push and turn ignition

Four casters wheels for quick mobility

Handy fold-and-go design covers the griddle
and makes it portable for any occasion

62000-BTU stainless steel burners with
easy push and turn ignition - 4 burners

Uses Propane Gas

Includes the Pit Boss® Best-in-Class 5-Year
Warranty



Ace No. 8037310

2 BURNER TABLETOP GRIDDLE

Cooks everything from scrambled eggs
and pancakes to seared steak and fajitas

289 Sq. In. of Cooking Surface

Two separately controlled burners with
easy push and turn ignition

Fuel Type: Liquid Propane

Ignition Type: Push Button

Primary Burner Output: 15000 BTUs; Secondary
Burner Output: 15000 BTUs - 2 burners

Includes the Pit Boss® Best-in-Class 5-Year
Warranty

Includes Cover



Ace No. 8037311

1 BURNER TABLETOP GRIDDLE

Cooks everything from scrambled eggs
and pancakes to seared steak and fajitas

289 Sq. In. of Cooking Surface

One separately controlled burner with easy
push and turn ignition

Fuel Type: Liquid Propane

Ignition Type: Push Button

Primary Burner Output: 15000 BTUs -
1 burner

Includes the Pit Boss® Best-in-Class 5-Year
Warranty

Includes Cover





**MASTERBUILT GRAVITY SERIES™
GRILL COVER
ACE NO. 8047287**

Sized to fit the Gravity Series™ 1050 Grill
Heavy-duty cover with
double-stitched seams



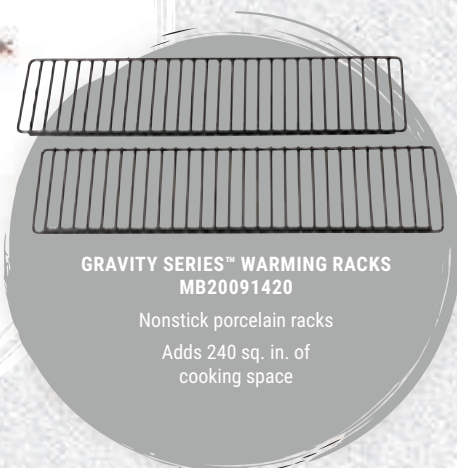
**GRAVITY SERIES™ 1050
GRILL + SMOKER
Ace No. 8047280**

Charcoal-fueled grill with electronic
temperature control
Gravity-fed charcoal hopper holds 8–10 hours of fuel
Temperature can be set from 200–700°F
Folding stainless steel shelf for preparation
Built-in temperature gauge and meat probe
included
Digital fan allows for precise
temperature control



**GRAVITY SERIES™ ROTISSERIE KIT
MB20091220**

Spit rod and meat claws hold up
to 20 lb. of food
Works with both Gravity Series™
1050 and 560 models



**GRAVITY SERIES™ WARMING RACKS
MB20091420**

Nonstick porcelain racks
Adds 240 sq. in. of
cooking space



Ace No. 8063966

Masterbuilt® 30" Analog Electric Vertical
Smoker

4 Chrome-coated cooking racks

Provides 531 sq. in. of cooking space



Ace No. 8063964

Masterbuilt® 30" Digital Electric Vertical
Smoker

Digital control panel provides precise
temperatures

Includes 4 stainless steel shelves



Ace No. 8063965

Masterbuilt® 40" Digital Electric Vertical
Smoker

Electrical control panel provides precise
temperatures

Fueled by charcoal



Ace No. 8450090

Masterbuilt® 30" Propane Smoker

4 Chrome-coated cooking shelves

Provides 747 sq. in. of cooking space



Ace No. 8536682

BIG JOE 24"

24" Cooking surface provides 452 sq. in. of cooking space

Air Lift hinge provides ease with opening and closing the lid

Divide and Conquer rack system provides various levels for cooking

Built-in thermometer, temps range from 165°–900° F

Caster wheels and heavy-duty stand are included



Ace No. 8536674

CLASSIC 18"

18" Cooking surface provides 256 sq. in. of cooking space

Air Lift hinge provides ease with opening and closing the lid

Divide and Conquer rack system provides various levels for cooking

Built-in thermometer, temps range from 165°–900° F

Caster wheels and heavy-duty stand are included



Ace No. 8028443

CLASSIC III

18" Cooking surface provides 256 sq. in. of cooking space

Air Lift hinge provides ease with opening and closing the lid

Divide and Conquer rack system provides various levels for cooking

Built-in thermometer, temps range from 165°–900° F

Caster wheels and heavy-duty stand are included



Ace No. 8028440

BIG JOE III

24" Cooking surface provides 452 sq. in. of cooking space

Air Lift hinge provides ease with opening and closing the lid

Divide and Conquer rack system provides various levels for cooking

Built-in thermometer, temps range from 165°–900° F

Caster wheels and heavy-duty stand are included



Ace No. 8400624

JOE JR.

13" Cooking surface provides 148 sq. in. of cooking space

Transportable making it great for tailgating and picnics

Includes deflector plates for both direct and indirect cooking

Built-in thermometer, temps range from 165°–900° F

Heavy-duty stand with handles is included





Ace No. 8486656

FIREDISC® 36" PORTABLE GRILL FIREMAN RED LP

High-heat, powder-coated at 450°F with 40,000 BTUs

Total Cooking Area is 69.1" disc circumference

Fuel Type is Liquid Propane with Sure Flame™ Burner (4"D x 9"L)

5-Year Warranty

Grill Cover (8486524)



Ace No. 8044546

PKGO WITH FLIPKIT

The newest cast-aluminum PK, tailor-made for camping and tailgating. FlipKit™ converts into two (2) Hibachi style grills. 20-year warranty.

408 sq. in. of cooking surface

Dual water-shedding radial exhaust vents

Real two-zone cooking

Molded cradle, charcoal grate, cast iron cooking surface



Ace No. 8048038

PKGO HIBACHI

The newest cast-aluminum PK in a topless version for a great price. Locking PK cutting board top included. 20-year warranty.

Engineered for portability - 25 lb.

204 sq. in. of cooking surface

Unique partitioned lower vents direct intake airflow



Ace No. 8017407

PK360 GRAPHITE

The acclaimed and award-winning flagship PK Grill & Smoker. 20-year warranty.

360 sq. in. of marine-grade stainless steel cooking surface

Versatility for low and slow or hot and fast grilling - 4-point venting results in a very heat-efficient cook chamber with easy two-zone setup and more control than the average 2-vent grill

Engineered for portability - detaches from its stand easily

Detachable Durabilium™ shelves provide a no-nonsense, weatherproof workspace

Grill Cover (8017409)



Ace No. 8020824

PKTX GRILL & SMOKER GRAPHITE

A popular version of the best-selling Original PK Grill, with a unique foldable cart. 20-year warranty.

Rustproof and durable aluminum construction, 300 sq. in. of cooking surface

Versatility for low and slow or hot and fast grilling - 4-point venting results in a very heat-efficient cook chamber with easy two-zone setup and more control than the average 2-vent grill

Grill Cover (8017414)



Ace No. 8430951

PK ORIGINAL GRILL & SMOKER SILVER

The award-winning cast-aluminum grill that started it all and continues to dominate the competition circuit and backyards across America. 20-year warranty.

Rustproof and durable aluminum construction, maintains exact temperature and conducts heat efficiently

300 sq. in. of cooking surface

Versatility for low and slow or hot and fast grilling - 4-point venting results in a very heat-efficient cook chamber with easy two-zone setup and more control than the average 2-vent grill

Grill Cover (8017414)



Ace No. 8431959

LITTLEMORE GRID

Adds 100 sq. in. to cooking surface

Stainless steel construction

Stands 3.5" above the main cooking surface

Useful for flexibility to refuel

Dimensions: 7.5" x 11.5" x 3.5"



Ace No. 8139867

BAYOU CLASSIC® SINGLE JET COOKER WITH HOSE GUARD

Single Jet, 106,000 BTUs

14" Cooking Surface

11.5" Tall Welded Frame with Hose Guard

Adjustable Flame Spreader

Heat-Resistant Paint

10 psi Preset Regulator with Brass Control Valve

48" Stainless Braided LPG Hose

Functionally designed for stockpots 14" diameter to 82 qt.

Ace No. 8422107

BAYOU CLASSIC® DOUBLE JET COOKER WITH HOSE GUARD

Dual Jets, 367,000 BTUs

18" Cooking Surface

12.5" Tall Welded Frame with Hose Guard

Heat-Resistant Paint

30 psi Adjustable Regulator

48" Stainless Braided LPG Hose

Functionally designed for stockpots 15" diameter to 102 qt.

Ace No. 8109761

BAYOU CLASSIC® HIGH PRESSURE COOKER

4" Cast Aluminum Burner, 59,000 BTUs

14" Cooking Surface

12.5" Tall Welded Frame

360° Windscreen Protection

Heat-Resistant Paint

10 psi Preset Regulator with Brass Control Valve

48" Stainless Braided LPG Hose

Functionally designed for stockpots 14" diameter to 62 qt.

Ace No. 8422073

BAYOU CLASSIC® BANJO COOKER WITH HOSE GUARD

10" Cast Iron Burner, 164,000 BTUs

16" Cooking Surface, 12.5" Tall

3/8" Round Bar Welded Frame with Hose Guard

360° Windscreen Protection

Heat-Resistant Paint

30 psi Adjustable Regulator

48" Stainless Braided LPG Hose

Functionally designed for stockpots 14" diameter to 122 qt.

Ace No. 8421885

BAYOU CLASSIC® DUAL BURNER COOKER

Dual 4" Cast Aluminum Burner - Dual 59,000 BTUs

Dual 14" Cooking Surfaces

31.5" Length x 12.5" Tall Welded Base Frame

Extension Legs raise height to 25"

360° Windscreen Protection

Heat-Resistant Paint

10 psi Regulator with Dual Brass Control Valves

Functionally designed for stockpots 12" diameter to 62 qt.



Ace No. 8139842

BAYOU CLASSIC® OUTDOOR PATIO STOVE

6" Cast Aluminum Burner, 41,000 BTUs

16" Cooking Surface

13.25" Tall Welded Frame

Heat-Resistant Paint

5 psi Adjustable Regulator

36" Stainless Braided LPG Hose

Functionally designed for stockpots 12" diameter to 30 qt.

Ace No. 8109373

BAYOU CLASSIC® ALUMINUM FISH COOKER

10 qt. Aluminum Fry Pot & Basket

5" Stainless Thermometer

14" Diameter Cooking Surface

19" Steel Frame with single bolt leg attachment

360° Windscreen Protection

High Pressure Burner

5 psi Adjustable Regulator

29" Stainless Braided Hose

Ace No. 8423527

4 GAL. BAYOU CLASSIC® FRYER

4 Gal. Stainless Fryer - Free Standing

Two Stainless Mesh Baskets

Fry Thermometer

Drain Valve

High Pressure Regulator with Brass Control Valve

48" Stainless Braided LPG Hose

Ace No. 8432429

2.5 GAL. BAYOU CLASSIC® FRYER

2.5 Gal. Stainless Fryer - Tabletop or Free Standing

Stainless Mesh Baskets with Cool-Touch Handles - 11" x 5.5" x 4.25"

Fry Thermometer

Drain Valve

High Pressure Regulator with Brass Control Valve

48" Stainless Braided LPG Hose

RUBS & SAUCES



BEEF RUB TRAERER 8.25 OZ.
8797250



TRAERER RUB 9 OZ.
8797268



PORK & POULTRY RUB 9.25 OZ.
8797136



CHICKEN RUB TRAERER 9 OZ.
8797185



PRIME RIB RUB 9.25 OZ.
8797045



APRICOT BBQ SAUCE
8797128



SUGAR LIPS GLAZE
8924466



SWEET & HEAT BBQ SAUCE
8797227



TEXAS SPICY BBQ SAUCE
8797110



TRAERER 'QUE BBQ SAUCE
8797060



**BLUES HOG ALL PURPOSE
SEASONING RUB 26 OZ.**
8003503



**BLUES HOG ALL PURPOSE
SEASONING RUB 5.5 OZ.**
8003500



**BLUES HOG ORIGINAL
BBQ SAUCE 20 OZ.**
8003502



**BLUES HOG TENNESSEE
RED BBQ SAUCE 19 OZ.**
8003499



**BLUES HOG SMOKEY MOUNTAIN
BBQ SAUCE 19 OZ.**
8003498



**BONE SUCKIN' SAUCE
SEASONING & RUB 6.2 OZ.**
8395584



**THREE LITTLE PIGS
BBQ RUB 6.5 OZ.**
8393431



**BONE SUCKIN' SAUCE THICKER
STYLE BBQ SAUCE 16 OZ.**
8393407



**RUB YOUR CHICKEN POULTRY
SEASONING RUB 6 OZ.**
8439564



**PIG'S ASS MEMPHIS
STYLE BBQ SAUCE 18 OZ.**
8395576



**KOSMOS Q SPG BEEF
DRY RUB 12 OZ.**
8029543



**KOSMOS Q DIRTY BIRD
DRY RUB 11 OZ.**
8029532



**KOSMOS Q HONEY KILLER
BEE BBQ RUB 13.2 OZ.**
8029541



**KOSMOS Q HONEY
CHIPOTLE KILLER BEE
BBQ RUB 12.6 OZ.**
8029550



**KOSMOS Q COW COVER
DRY RUB 10.5 OZ.**
8029540



**5280 CULINARY BBQ
PROVISIONS CHEFS BRINE
SEASONING MIX 16 OZ.**
8560153



**5280 CULINARY BBQ
PROVISIONS BBQ
OINK RUB 7 OZ.**
8562043



**5280 CULINARY BBQ
PROVISIONS BAYOU
BRINE MIX 16 OZ.**
8560195



PELLETS



ACE EXCLUSIVE



**RESERVE BLEND
PELLETS**
8015887



**APPLE
PELLETS**
8306532



**CHERRY
PELLETS**
8306375



**HICKORY
PELLETS**
8207433



**MESQUITE
PELLETS**
8207441



**PECAN
PELLETS**
8306540



**SIGNATURE
BLEND PELLETS**
8562654



**TURKEY
BLEND PELLETS**
8013985

SEASONAL



APPLE 20 LB.
8032181



CHERRY 20 LB.
8032183



HICKORY 20 LB.
8032180



GRILLMASTER BLEND 20 LB.
8032182



MESQUITE PELLETS 20 LB.
8032185



**CHAMPIONSHIP
BLEND 40 LB.**
8039602



**B&B JACK DANIEL'S®
TENNESSEE WHISKEY
20 LB.**
8039601



REGIONAL

MIXON'S HICKORY 20 LB.
8016314



**COMPETITION BLEND
40 LB.**
8399883



**WISCONSIN HICKORY
40 LB.**
8399875



**TENNESSEE WHISKEY
BARREL 40 LB.**
8399933



BRIQUETS & LUMP CHARCOAL



**B&B NATURAL COMPETITION
CHAR-LOGS 30 LB.**
8019844



**B&B NATURAL MESQUITE
LUMP CHARCOAL
8 LB./20 LB.**
8023447/8023445



**B&B NATURAL HICKORY LUMP
CHARCOAL 8 LB./20 LB.**
8023448/8023446



**B&B NATURAL OAK CHARCOAL
BRIQUETS 8.8 LB./17.6 LB.**
8023369/8023367



**B&B NATURAL OAK LUMP
CHARCOAL 10 LB./20 LB.**
8684193/8684151



**KINGSFORD® ORIGINAL
CHARCOAL BRIQUETS
8 LB./16 LB.**
8024427/8021785



**KINGSFORD®
EASY LIGHT CHARCOAL
BRIQUETS 4 LB.**
8024824



**KINGSFORD® MATCH
LIGHT® CHARCOAL
BRIQUETS 8 LB./12 LB.**
8024426/8022025



**KINGSFORD® LONG BURN
CHARCOAL BRIQUETS
12 LB.**
8024823



**KINGSFORD®
PROFESSIONAL
CHARCOAL BRIQUETS
12 LB.**
8024822



**ROCKWOOD™ NATURAL
HARDWOOD LUMP
CHARCOAL 20 LB.**
8400772



**BIG GREEN EGG® NATURAL OAK
AND HICKORY LUMP
CHARCOAL 20 LB.**
8697104D



**BLUES HOG PREMIUM
HARDWOOD LUMP
CHARCOAL 20 LB.**
8003504



**COWBOY™ HARDWOOD
LUMP CHARCOAL
8 LB.**
8129520



**GRILL MARK™ PREMIUM
CHARCOAL BRIQUETS
15.4 LB.**
8273369

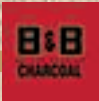


**FOGO PREMIUM HARDWOOD
LUMP CHARCOAL
8.8 LB./17.6 LB.**
CHARCOAL 8.8 LB./17.6 LB.
8028041/8028042



**FOGO SUPER PREMIUM ALL
NATURAL HARDWOOD LUMP
CHARCOAL 17.6 LB.**
8028040

SMOKING CHIPS & CHUNKS



APPLE
CHIPS: 8019855
CHUNKS: 8023371



CHERRY
CHIPS: 8019856
CHUNKS: 8023366



CHAMPIONSHIP BLEND
CHIPS: 8029986



HICKORY
CHIPS: 8019852
CHUNKS: 8019843



MAPLE
CHIPS: 8019857
CHUNKS: 8019842



MESQUITE
CHIPS: 8019853
CHUNKS: 8023373



PECAN
CHIPS: 8019854
CHUNKS: 8023374



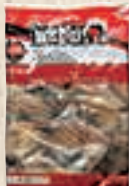
POST OAK
CHIPS: 8023370
CHUNKS: 8023372



PINON
CHUNKS: 8023450



APPLE
CHIPS: 8532129
CHUNKS: 8532178



CHERRY
CHIPS: 8532046
CHUNKS: 8532186



HICKORY
CHIPS: 8531998
CHUNKS: 8532269



MESQUITE
CHIPS: 8531972
CHUNKS: 8532145



PECAN
CHIPS: 8532020
CHUNKS: 8532061

LOGS



B&B APPLE
8019849



B&B CHERRY
8019850



B&B HICKORY
8019845



B&B MAPLE
8019851



B&B MESQUITE
8019846



B&B PECAN
8019847



B&B PINON
8023449



B&B POST OAK
8019848



THE **ORIGINAL** WOOD PELLET GRILL



ACE
The helpful place.

ACE HARDWARE CORPORATION
2200 KENSINGTON COURT · OAK BROOK, IL 60523